

NEW SampleWare

Samples Managed Simply

Improve your laboratory's efficiency with SampleWare, laboratory management software that allows you to store, organize, and track your sample data.



What is SampleWare?

- Laboratory Information Management System (LIMS) that allows you to organize and track individual samples in your library
- Inventory system compatible with barcode scanning and RFID technology
- Customizable database to match your unique workflow
- Cost-effective software solution: less expensive, easier to implement, and more flexible than other programs, and more reliable than older systems

How does SampleWare work?

- Define custom data templates to match your specific storage needs
- Create a directory tree based on project, owner, physical location, or other criteria
- Enter data through a spreadsheet interface or a graphic container interface
- Use the search tools to find specific samples, and eliminate the need to manually sift through sample data



Please see www.usascientific.com for more information on Micronic tubes, capping options, scanners, and tube sorters.

Getting Started with SampleWare

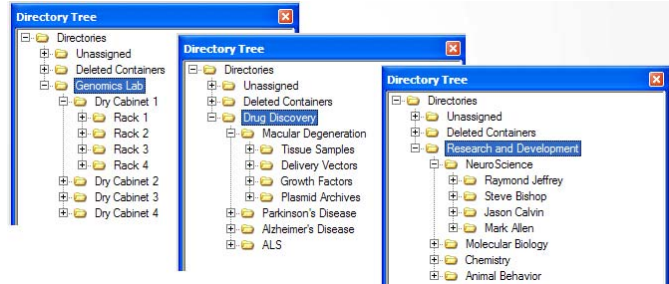
Installation to implementation in minutes, with only a few simple steps and some help from the Quick Menu.

Custom Data Templates

- Create to match the types of specific samples being stored or tracked
- No limit to the number of data templates

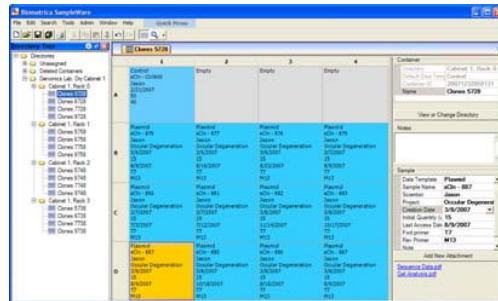
Flexible Data-Organization Hierarchy

- Arrange data to match your lab's operational workflow
- Order by sample location, experiment, or scientist - no folder limit



Spreadsheet Data Entry and Copy/Paste From Excel

- Excel-like spreadsheet, simple setup for easy data entry
- Copy from Excel to import existing data
- Export to Excel to create reports



Container View

- Displays data in 'box-top,' real world view
- Enables quick sample location/retrieval
- Samples can be color-coded by sample type

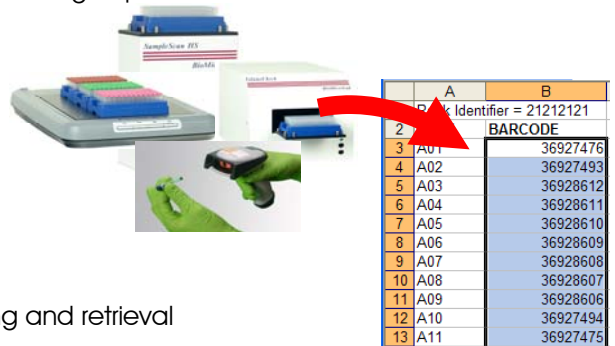


Sample Search

- Simple search: Google-like global search, works in an instant
- Advanced search: highly-specific search, finds exact samples or groups

2D Barcode/RFID Interface

- Insert sample data from 2D barcode readers sample lists (easy cut/paste process)
- Cut/paste readers lists for use in search engine



Storage Barcoding

- Assign IDs for cabinets, doors, shelves, racks, etc.
- Store all assigned IDs in database with samples for quick locating and retrieval

Software Pricing:

Item # Description

- 1712-4105 [SampleWare Version 3.0 Basic Edition](#) 5000-sample limit - Single-computer access
- 1712-4110 [SampleWare Version 3.0 Desktop Edition](#) No sample limit - Single-computer access
- 1712-4115 [SampleWare Version 3.0 Network Edition](#) No sample limit - SQL server database - Network access

Minimum System Requirements (Basic/Desktop Editions): Microsoft Windows 2000; 800MHz Celeron Processor; 256MB RAM; 150 MB free disk space; CD-ROM drive; Super VGA Graphics (800x600 resolution); keyboard and mouse

Minimum System Requirements (Network Edition): Internet connection for MSSQL host computer; network connection to hosting computer for all other computers; additional 100MB disk space on host computer; shared folders on host computer accessible to all users

Please contact us for a demonstration of SampleWare



Please see www.usascientific.com for more information on Micronic tubes, capping options, scanners, and tube sorters.