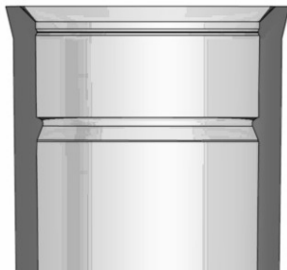
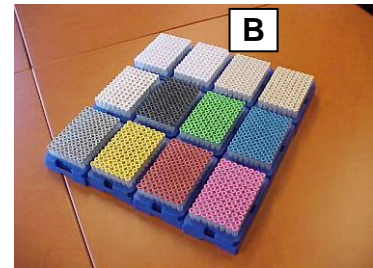
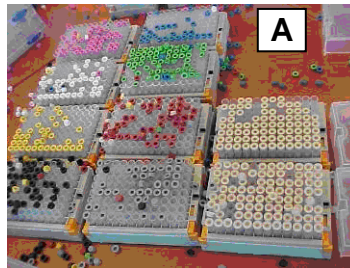


# The Micronic Difference: Sample Storage Solutions



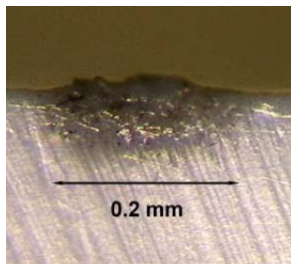
Only Micronic tubes have double rings at the top of the tubes to securely hold the caps in place and prevent caps from popping off during freeze/thaw cycles or piercing.



To demonstrate the security of the Micronic system, both Micronic and another brand of tubes were filled with 1.0 ml of water, capped, and frozen. The tubes were then placed on the bench to thaw. As the contents thawed, the caps popped off the other brand of tubes (A). **100% of the Micronic caps stayed on the Micronic tubes (B).**



Only Micronic laser etches the 2D bar-code onto the tube for the highest resistance to aggressive solvents and wear.



### Cross section of the Micronic 2D bar code.

The laser etched code is totally integrated and will not fade or peel off over time.



Code clarity will remain unchanged during the lifespan of the tube. Micronic also puts a human readable code on every tube.



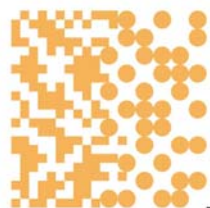
Micronic tubes are also available in **black** for light sensitive applications.



Micronic offers all tubes with either "U" or "V" shaped bottoms for flexibility in pipetting, mixing and drying applications.



Micronic tubes are made from the highest quality polypropylene and are manufactured in a class 10,000 clean room. Every single bar coded tube is read before it is shipped, ensuring 100% quality control.



**MICRONIC**

Traceable Sampling Solutions